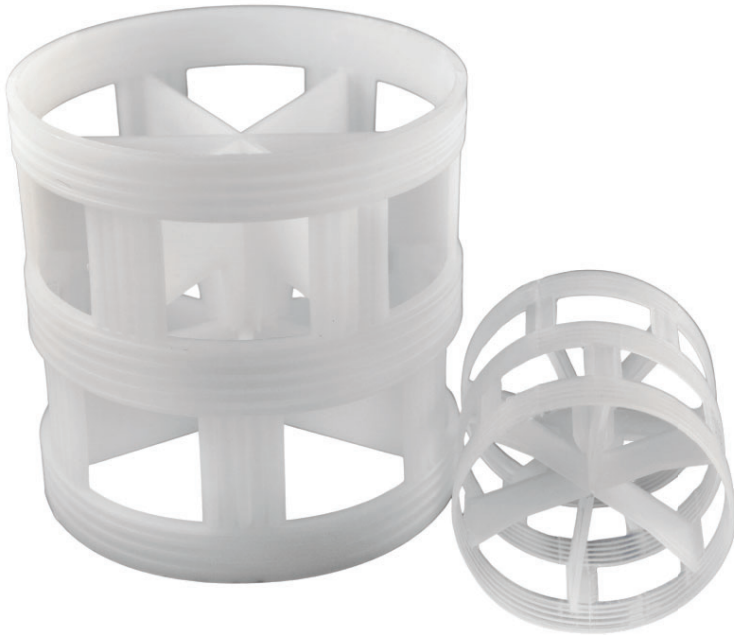


Pall Rings | Tower Packing

Effective distribution of liquids and gases

Over the last 40 years, Pall Rings have been known to be the oldest and most common type of packing. Pall Rings are essentially an advanced form of Raschig rings, with two rows of punched-out holes with fingers or webs turned into the center of a cylinder. Its cylindrical shape lowers its friction, thus improving packing area distribution, wetting, and liquid distribution. The internal cross structure of the Pall Ring makes it robust and suitable for use in deep-packed beds.



Nominal Size (in)	5/8 (15mm)	1 (25mm)	1 1/2 (40mm)	2 (50mm)	3 1/2 (90mm)
Void Fraction (%)	86	90	91	92	93
Geometric Surface Area (ft ² /ft ³)	108	67	44	38	27
Weight-PP (lb/ft ³)	7.75	4.40	4.75	3.85	3.45
Packing Factor (1/ft)	97	52	32	25	16

Standard Features:

- Excellent strength and stability when exposed to high temperatures and/or harsh chemicals
- High levels of separation efficiency and operational flexibility
- Higher capacity, efficiency, and lower pressure drops compared to saddle-shaped packing

Materials Available:

- PP, PE, PVC, CPVC, PVDF (Kynar®), PFA (Teflon®)

Applications:

- Scrubbing and absorption for odor control
- Stripping and degassing for water treatment
- Particulate removal from gases
- Aeration, ozonation, and mixing
- Cooling tower
- Mist elimination

For Rental or Purchase Inquiries:

MACH Engineering, LLC

15750 Tuckerton Road, Houston, Texas 77095
(281) 550-3232 | sales@machengineering.com
<https://www.machengineering.com/>